

## 1320 SERIES



### ■ Features

- Directly drives the TTL or C-MOS IC.
- Available from low frequency range up, 875kHz.
- Large fanout capability TTL5 (LS-TTL25).
- Low power consumption high speed Tr/Tf and accurate duty cycle (45 to 55%/< 6.5MHz).

### ■ Absolute Maximum Rating

Supply Voltage ( $V_{DD}$ )  $-0.5\sim+7.0V$  DC

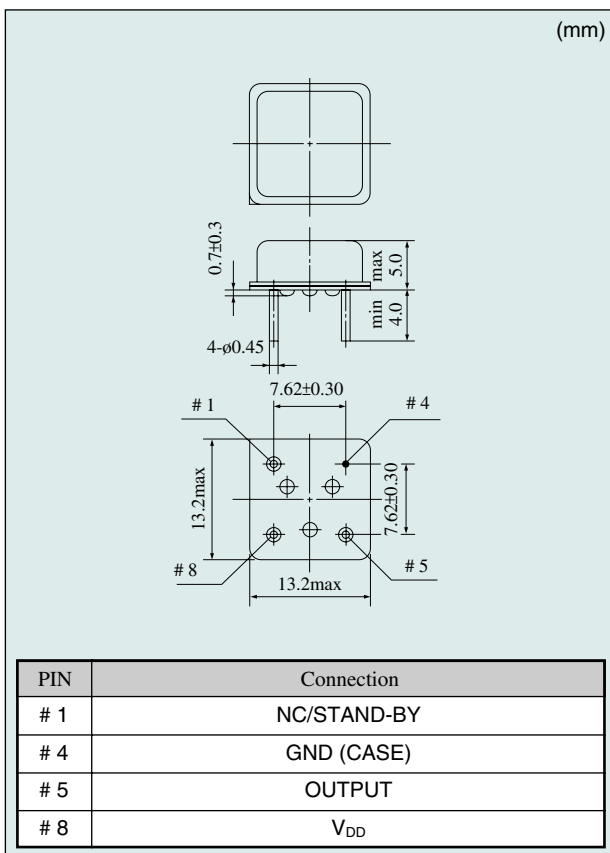
Storage Temperature Range  $-55\sim+125^{\circ}C$

Item		Model	1326	1327	1328	1329		
Frequency	(MHz)		0.875~1.75	1.75~3.5	3.5~7	7~15	15~22	
Supply Voltage ( $V_{DD}$ )	(V)		+5±10%					
Current Consumption	(mA) +5VDC, 25°C		5 (TYP) 10 (max)				8 (TYP) 13 (max)	
$V_{OL}$ max/ $V_{OH}$ min	(V)		0.4/ $V_{DD}$ ~0.5 $I_{OL}=8mA$ $I_{OH}=-8mA$					
Tr max/Tf max	(ns)		5/5 (Value between 0.1× $V_{DD}$ and 0.9× $V_{DD}$ )					
Duty Cycle	(%)	1/2 $V_{DD}$	45~55 (< 6.5MHz), 40~60(≥ 6.5MHz)					
		1.4V	45~55 (< 6.5MHz), 40~60(≥ 6.5MHz)					
Fanout (gate)	$C_L$ (pF)		15					
	TTL GATE		5					
Stand-by Function	Tri-state		Yes					

Note: The values of Current Consumption, Tr/Tf, Duty Cycle show the standard values under 5TTL.

If requested, Duty Cycle 45~55% (< 6.5MHz), No stand-by function version #5 pin : L level or no osc, #1 pin : L level (+0.8V max) is available.

### ■ 1320 Series Outline

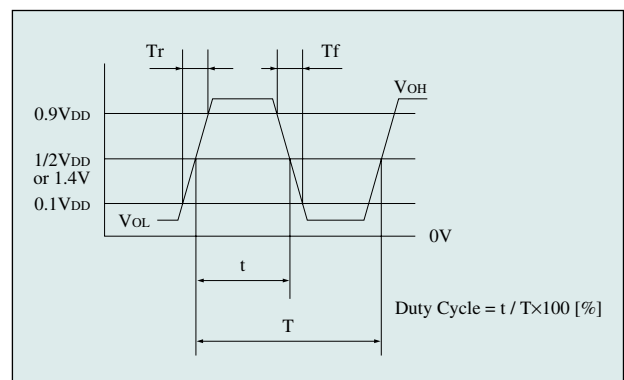


### ■ Option of Frequency Stability

Frequency stability ( $\times 10^{-6}$ )	±50	±100
Op. Temp.		
0~+70°C	A	B
-10~+70°C	—	G
-20~+70°C	—	M

Standard

### ■ Output Wave <C-MOS/TTL>



### ■ Stand-by Function <Tri-state>

# 1 pin input	# 5 pin output
H level (+2.2 Vmin) or open	Operating
L level (+0.8 Vmax)	High impedance